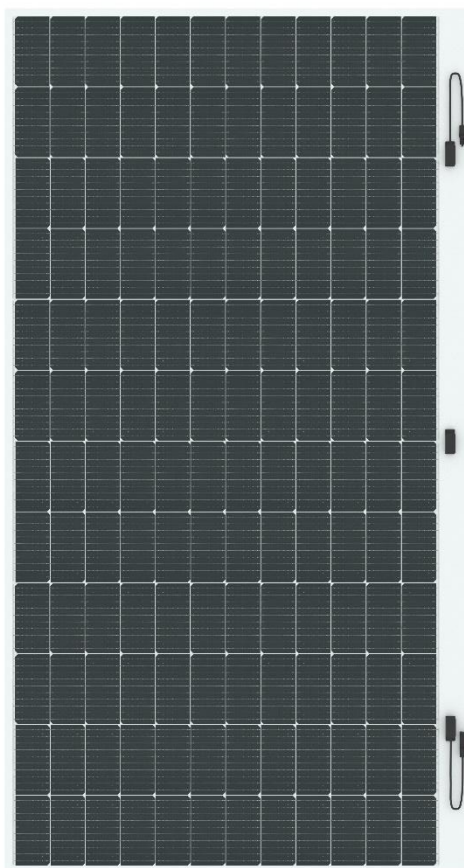


SolarVela Pro 轻质晶硅组件

组件型号: ZKFN B1 010A 组件功率: 550W-560W



560W	22.7%	0~+5W
最大输出功率	转换效率	功率公差

功率质保25年

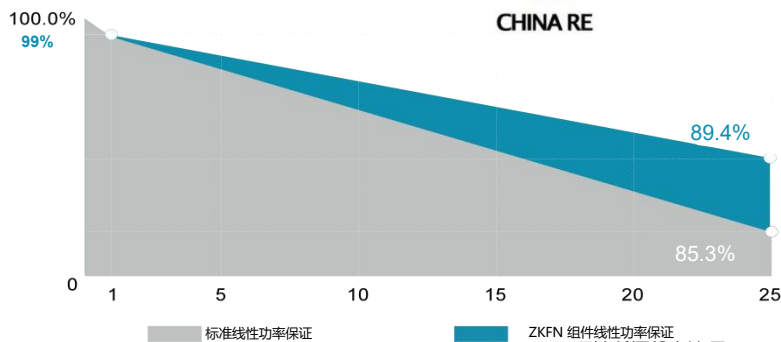
12年
质量保证

25年
功率质保

中国大地财产保险承保



CHINA RE



※首年衰减小于1%，25年功率输出不低于89.4%。

产品及体系认证



ISO三体系认证



轻

重量2.9 kg/m²，低于传统玻璃组件重量的30%



强

业界首款冰雪冲击无隐裂，功率零衰减柔性晶硅组件



薄

厚度1.8mm（不含接线盒），是传统组件厚度的50%



易

系统无需支架，原装面直接粘贴，结构胶快速安装



柔

最小弯曲半径可达0.3m，电池无隐裂，功率无衰减

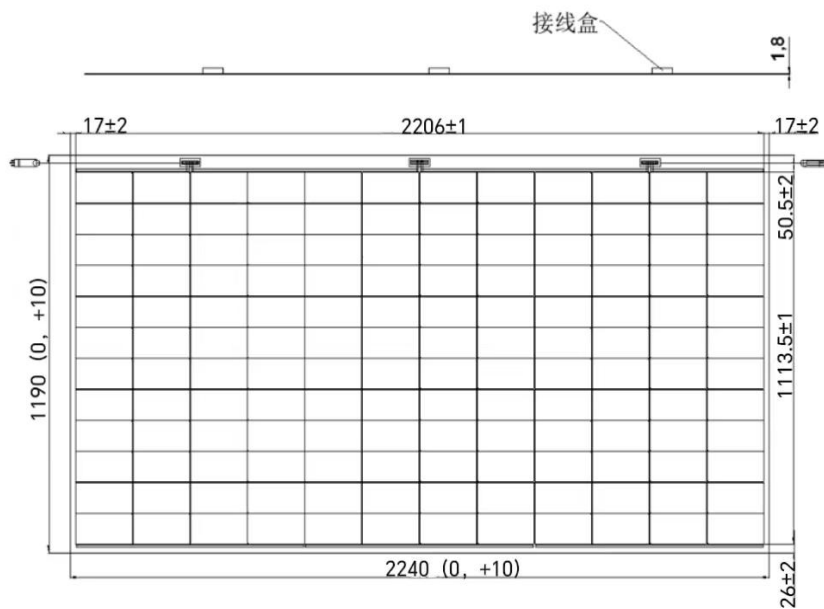


美

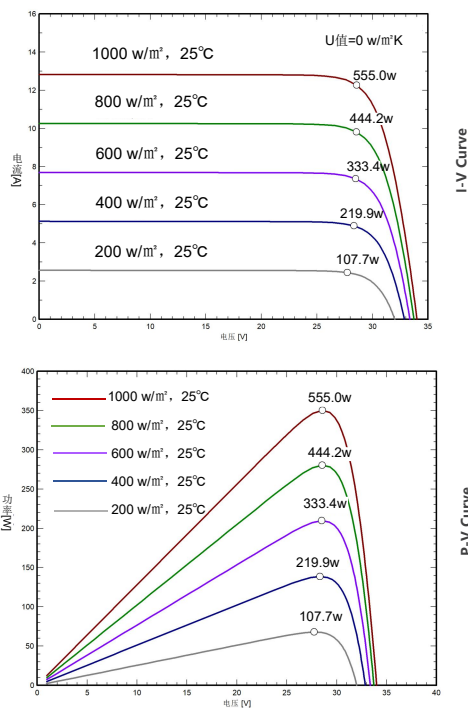
表面颜色和图案可定制化，满足建筑美学要求



组件尺寸(mm)



曲线特性图(例: 555Wp)



组件型号		ZKFN B1 010A-550	ZKFN B1 010A-555	ZKFN B1 010A-560
峰值功率	PMPP [W]	550	555	560
功率公差	0 ~ +3% [W]	0-5w	0-5w	0-5w
峰值电压	VMPP [V]	45.19	45.25	45.29
峰值电流	IMPP [A]	12.18	12.27	12.37
开路电压	Voc [V]	52.96	53.01	53.05
短路电流	Isc [A]	12.95	12.92	12.96
最大保险丝额定电 流	[A]		25	
最大系统电压	IEC/UL [V]		1500V DC(IEC)	

STC * (标准测试条件):辐照度=1000W/m²,电池温度=25°C,AM=1.5, 测试误差±3%

电性能参数 (NMOT *)

组件型号		ZKFN B1 010A-550	ZKFN B1 010A-555	ZKFN B1 010A-560
峰值功率	PMPP [W]	414.15	417.92	421.68
峰值电压	VMPP [V]	42.34	42.40	42.44
峰值电流	IMPP [A]	9.79	9.87	9.95
开路电压	Voc [V]	50.31	50.36	50.40
短路电流	Isc [A]	10.40	10.43	10.46

NMOT * (组件标称工作温度条件):辐照度=800W/m²,环境温度=20°C,AM=1.5, 风速=1m/s

温度系数

温度系数 (PMPP)	[%/°C]	-0.29
温度系数 (Voc)	[%/°C]	-0.26
温度系数 (Isc)	[%/°C]	+0.045
标称工作温度NOCT	°C	45±2°C

机械参数

电池规格	Topcon电池 182.2mm*183.75mm
组件尺寸	2240*1190*1.8mm
组件厚度	1.8mm (不含接线盒)
组件重量	7.6kg/片
输出线	4mm², 导线长度370mm (可按照客户需求订制)
连接器	MC4兼容
接线盒	IP68
背板颜色	黑色/白色

应用参数

最大系统电压	DC1500V
功率公差	0 ~ +5W
工作温度	-40°C ~ +85°C
最大保险丝额定电流	25A
静态载荷	正面5400Pa, 背面2400Pa

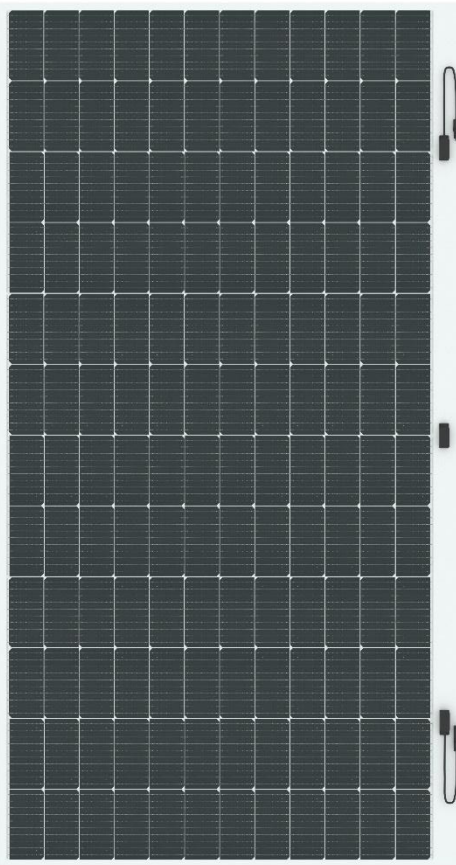
包装信息

运输方式	货柜大小	数量 (片)	数量 (每托)
货柜	40HQ	1260	70
平板拖车	13米	1400	70
平板拖车	17.5米	1960	70

SolarVela Pro

Topcon Flexible Module

Module type: ZKFN B1 010A Peak-power: 550W-560W

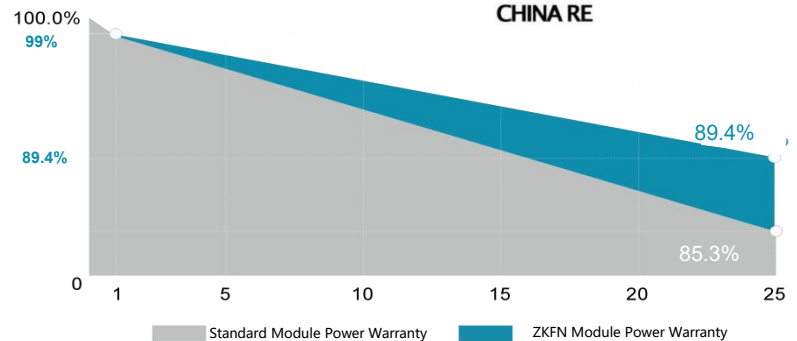


560W	22.7%	0~+5W
Max-Power	Efficiency	Power-tolerance

Reinsurance Coverage for 25 Years



Insured by China RE



※1st year degradation less than 1%, 25 years power output 89.4% guaranteed.

Quality Assurance



ISO三体系认证



Low-weight

Areal weight: 2.9 kg/m², Less than 30% of traditional glass-based solar modules



High-strength

World's only C-Si flexible module which can endure hail-strike without cell cracks and power losses



Thin

Thickness: 1.8 mm (junction box not included), Only 50% of traditional glass-based solar modules



Easy-to-install

No need for PV support bracket, modules can be directly bonded to installation surface by weather-resistant glue



Flexible

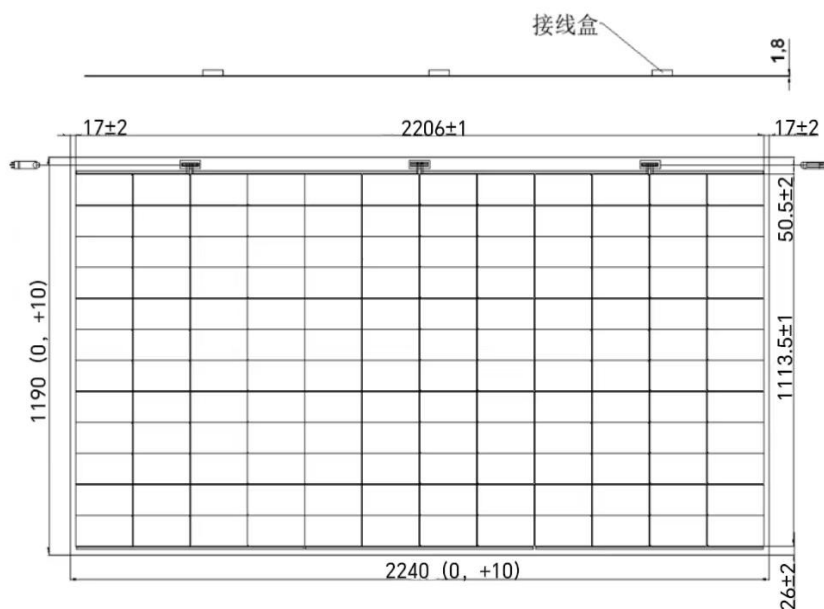
Smallest bending radius of 0.3 m, No cell cracks and no power losses



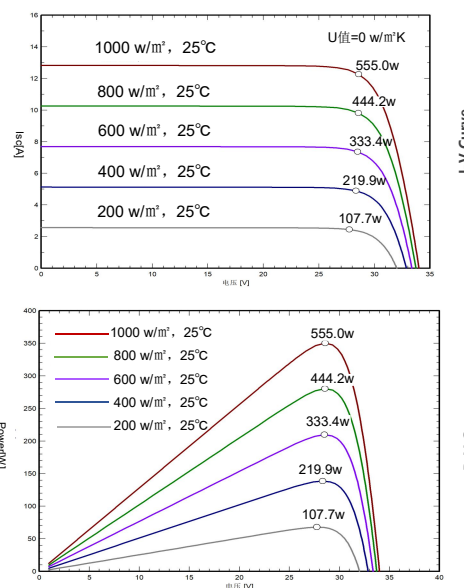
Aesthetics

Module's surface and texture can be customized to meet aesthetic requirements

Size (mm)



Curve characteristic diagram (555Wp)



Module Type		ZKFN B1 010A-550	ZKFN B1 010A-555	ZKFN B1 010A-560
Max-Power	PMPP [W]	550	555	560
Power Tolerance	0~+3% [W]	0-5w	0-5w	0-5w
Max-Power Voltage	VMPP [V]	45.19	45.25	45.29
Max-Power Current	IMPP [A]	12.18	12.27	12.37
Open-Circuit Voltage	Voc [V]	52.96	53.01	53.05
Short-Circuit Current	Isc [A]	12.95	12.92	12.96
Max. series fuse rating	[A]		25	
Max. system voltage	IEC/UL [V]	1500V DC(IEC)		

STC*: Irradiance=1000 W/m², Module temperature=25°C, AM=1.5, test error ±3%

Electrical performance parameters (NMOT *)

Module Type		ZKFN B1 010A-550	ZKFN B1 010A-555	ZKFN B1 010A-560
Max-Power	PMPP [W]	414.15	417.92	421.68
Max-Power Voltage	VMPP [V]	42.34	42.40	42.44
Max-Power Current	IMPP [A]	9.79	9.87	9.95
Open-Circuit Voltage	Voc [V]	50.31	50.36	50.40
Short-Circuit Current	Isc [A]	10.40	10.43	10.46

NMOT*: Irradiance=800 W/m², Ambient temperature=20°C, Wind speed=1 m/s

Temperature coefficient

Temperature-coefficient of PMPP	[%/°C]	-0.29
Temperature-coefficient of Voc	[%/°C]	-0.26
Temperature-coefficient of Isc	[%/°C]	+0.045
NOCT	°C	45±2°C

Mechanical parameters

Cell Type	Topcon 182.2mm*183.75mm
Size	2240*1190*1.8mm
Thickness	1.8mm (junction box not included)
Weight	7.6kg/module
Connector	MC4 Compatible
Junction-box	Triad Junction box IP68
Backboard color	White

Application parameters

Max. system voltage	DC 1500V
Power Tolerance	0 ~ +5 W
Operating temperature range	-40 °C ~ +85°C
Max. series fuse rating	25 A
Mechanical Load	Front 5400Pa, Back 2400Pa

Package

Transportation	Container size	Quantity (pcs)	Quantity (per pallet)
Container	40' HQ	1260	70
Platform Trailer	13m	1400	70
Platform Trailer	17.5m	1960	70



中科富能
ZKFN SOLAR

山东中科富能光电科技有限公司

SHANDONG ZKFN SOLAR TECHNOLOGY CO.,LTD.

Tel.: 0086 400 6768 100 / 00866 199 0537 7053 Web.: www.zkfn.com

Add.: Workshop 1, XinShenglin, Green Sea Gateway Intelligent Manufacturing Industrial Park, Jining Economic and Technological Development Zone, Jining, Shandong

